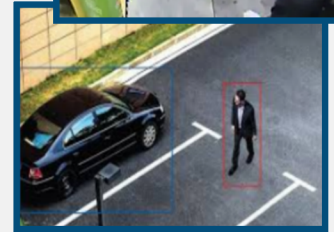




STS, the financial security leader in innovative technology has listened to our partners and engineered a solution to ATM loitering and theft. Our cutting edge solution incorporates live video monitoring to reduce branch-wide false alarm dispatches. Video analytics technology is incorporated at the ATM to detect unusual activity, initiating live video monitoring, one way voice communication, and high powered lighting to stop an attack before it occurs. This solution has been responsible for over 700 apprehensions and countless preventions.

FEATURES AND HIGHLIGHTS

- ✓ **Video Alarm Verification** Upon activation of any burglar alarm device up to 8 camera views will be displayed in the STS Monitoring Center. This gives dispatchers visual insight to allow for a more informed decision on dispatching law enforcement, thereby reducing false alarms. This service is active 24 hours a day / 7 days a week.
- ✓ **Video Monitoring** Activity Artificial Intelligence and Advanced Analytics utilizes an algorithm to alert when a human or vehicle is conducting any unusual activity within the view of that camera. The STS Monitoring Center dispatcher will have the ability to view the live video and react immediately by activating external alarm devices including lights, strobes, speakers, sirens, etc. This service is active on an 8 hour / day schedule, providing the dispatcher visual insight to activate the alarm for suspicious activity prior to device being triggered.
- ✓ **SIP Speakers** SIP Speakers are an IP based speaker that can be installed anywhere in the world and pointed back at the STS N-Sight Monitoring Center. This gives dispatchers the ability to talk directly to individuals on site. All audio interactions are recorded and stored for future use.



BENEFITS

- Cloud-based - no software or hardware required.
- Detailed descriptions of bad actors.
- Quicker response times.
- Video System Health Monitoring, Camera or DVR issues will be reported to your service company for proactive response.
- Higher apprehension rate.
- Accurate detection rates and decreased false-alarms.
- Helps local law enforcement track and capture criminals.
- Record the entire incident for documentation and evidence.
- Cost savings - reduced damages and loss of goods, insurance premiums, legal costs, and false alarm fines.
- Customizable Reporting.
- Open / closed reports. Know when the branch is armed and disarmed each day.
- Monthly test reporting. Ensures that branches are performing monthly tests.

