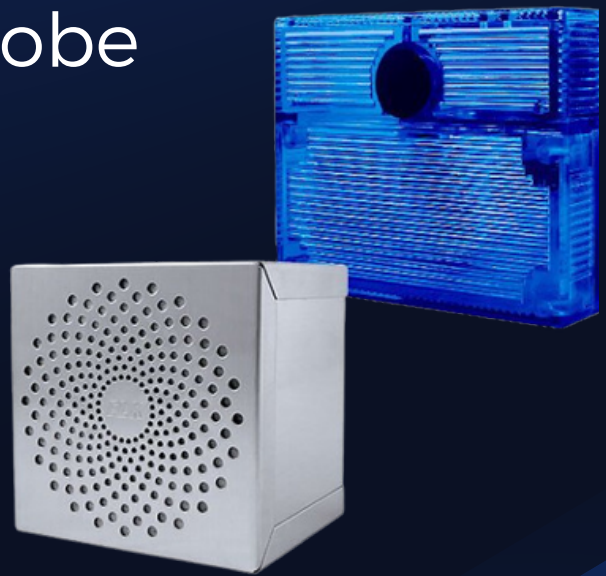




# HOOK & CHAIN SOLUTION

## Exterior Siren and Strobe

Introducing a powerful new solution to enhance security at your financial institution and deter hook & chain events.



### Features and Benefits

- Wireless exterior siren and a wired strobe.
- Activated immediately upon the opening of the ATM hood.
- Automatically arms and disarms itself according to your preferred schedule,
- Customizable activation times.
- Will not disrupt cash replenishment procedures.
- A notification is sent to the monitoring company when activated,
- Adds a level of chaos for perpetrators.

Contact us today to learn more!